

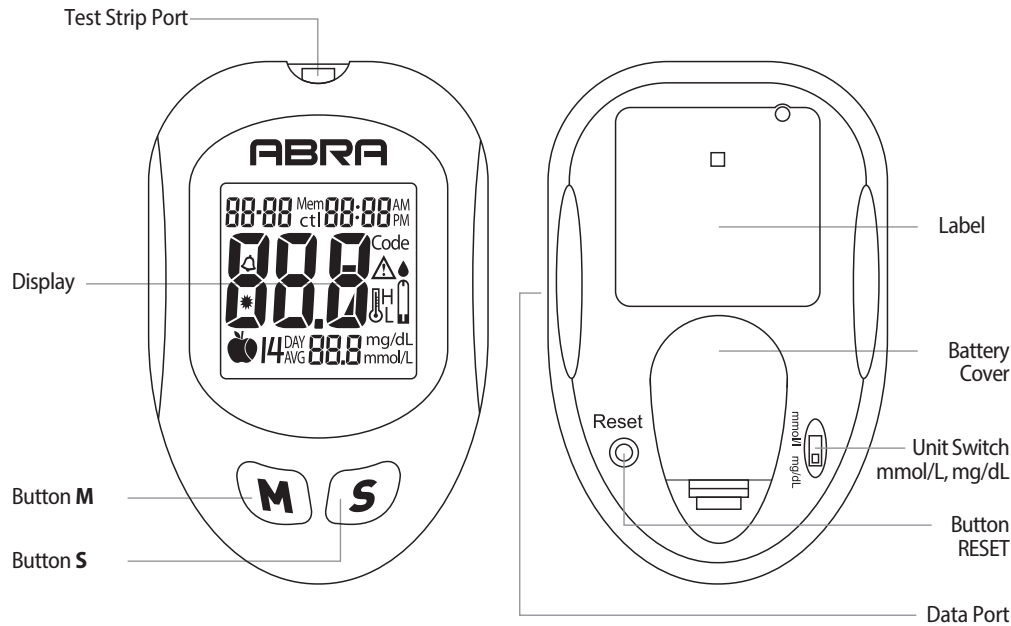
QUICK REFERENCE GUIDE

ABRA

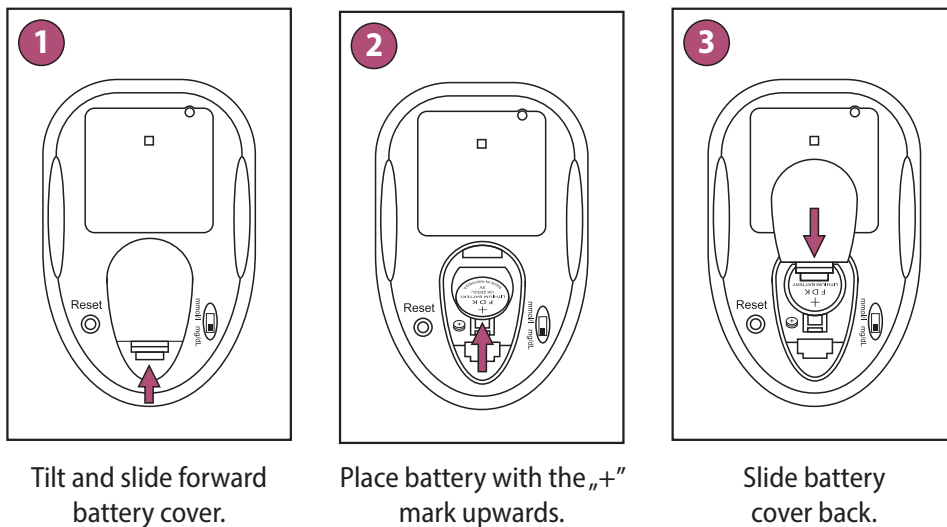
BLOOD GLUCOSE MONITORING SYSTEM

This manual will help you to set up and prepare the meter for carrying out the testing. For details, please refer to the Instructions for Use included in the ABRA kit.

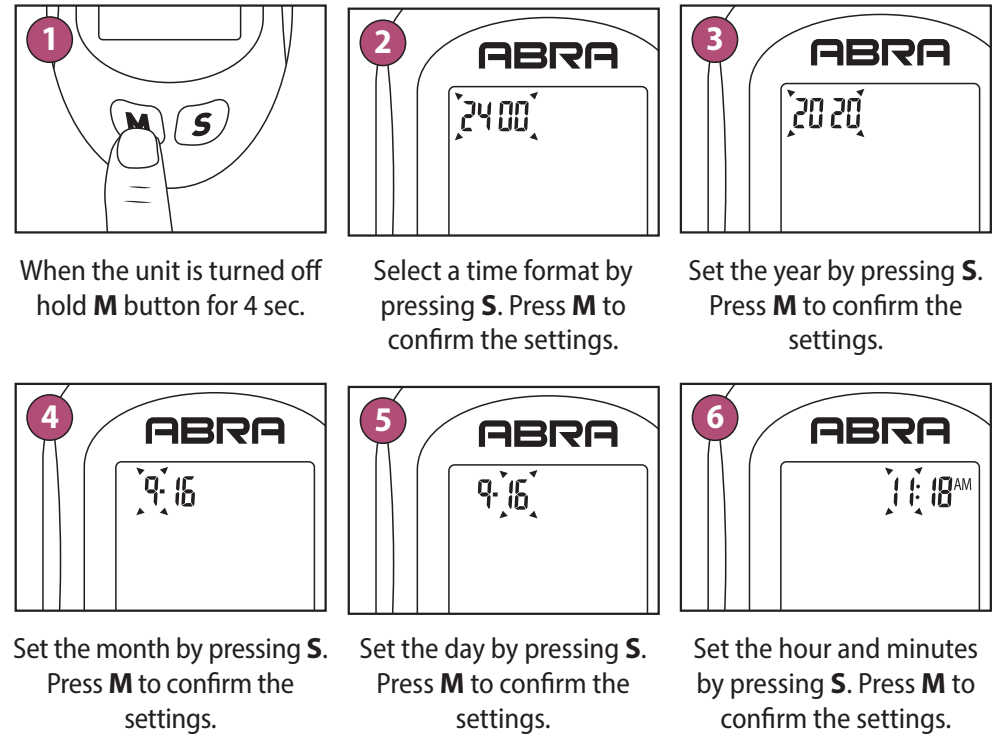
1. GLUCOSE METER DESCRIPTION



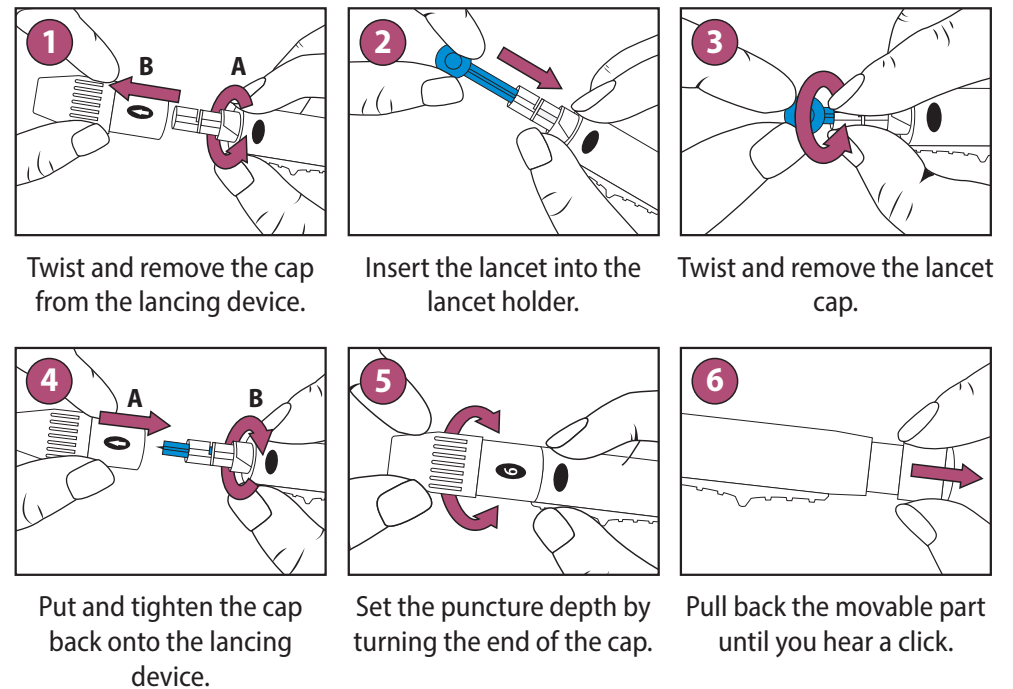
2. STARTING THE DEVICE



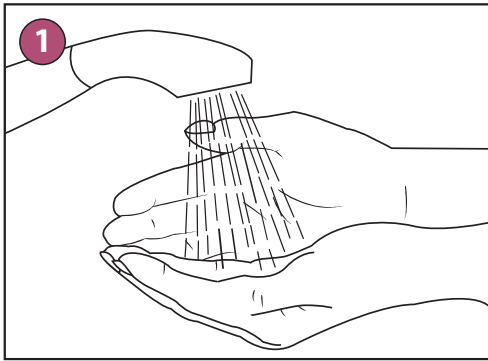
3. SETTING THE DATE AND TIME



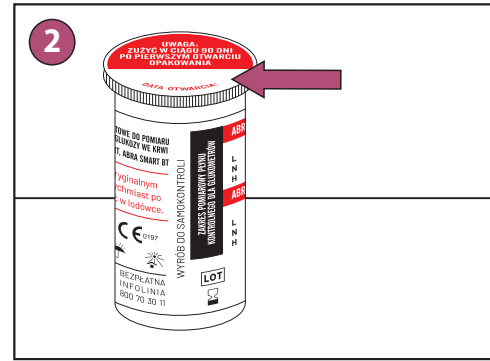
4. PREPARING THE LANCING DEVICE



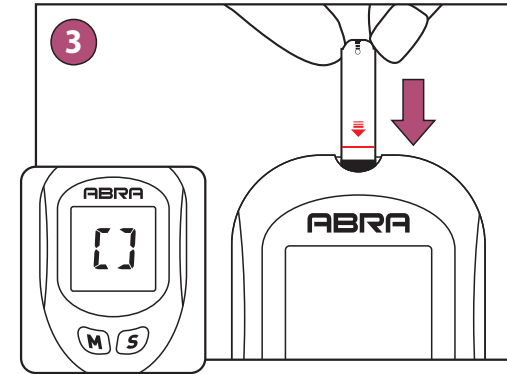
5. PERFORMING A TEST



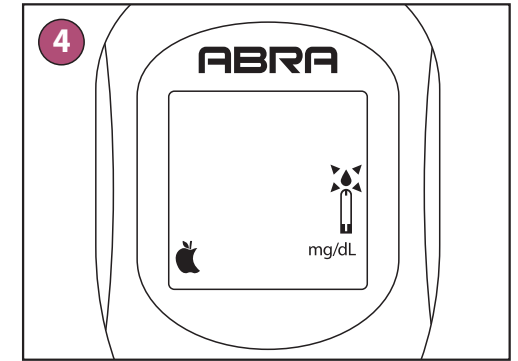
1 Before performing the test, wash your hands thoroughly and dry them.






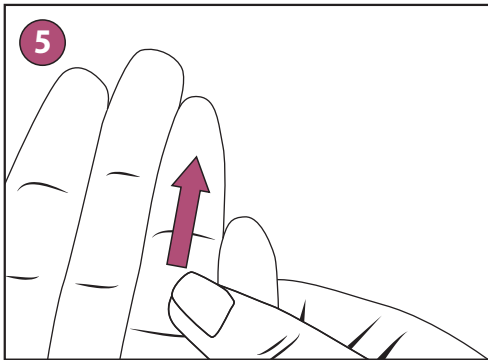
2 Put down the date when the vial has been firstly opened. Remove the strip from vial and tightly seal the cap. Put down the date of the first vial opening.



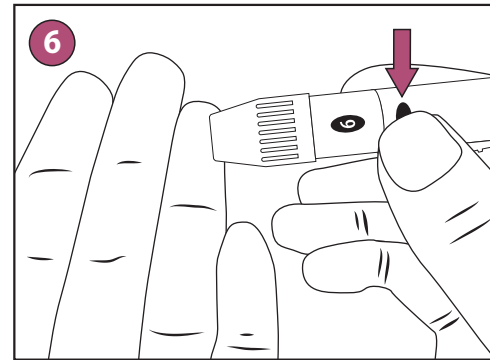
3 Insert a test strip. You will hear the beep sound and moving lines will appear on the display.



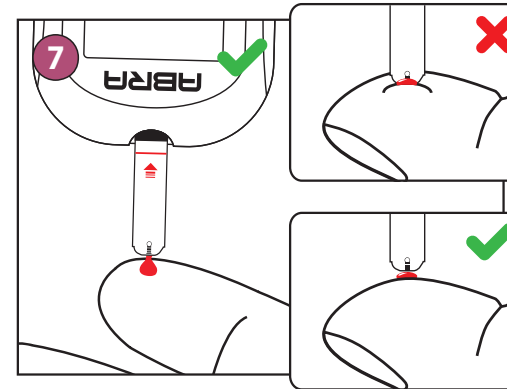
4 A flashing  means that the device is ready to take a blood sample. Use **M** button to mark a test as pre-meal  or post-meal .



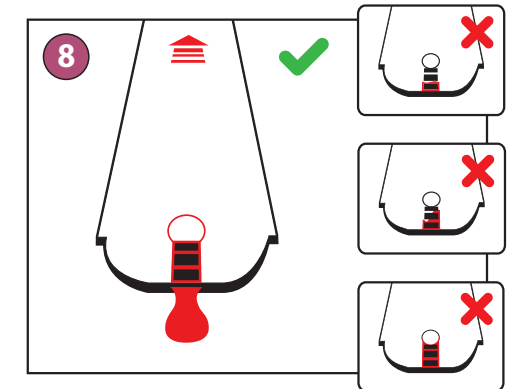
5 Massage vigorously the place of blood sampling.



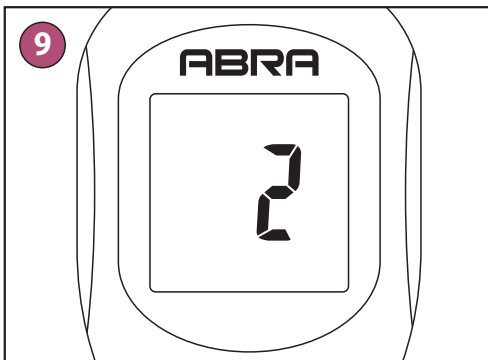
6 Firmly press the lancing device to the fingertip and press the release button. Click sound means that the puncture has been performed.



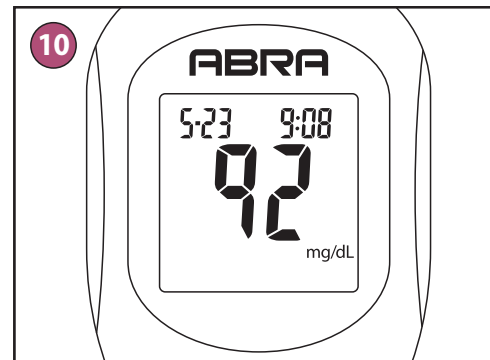
7 Apply the glucose meter with a strip to a drop of blood. Blood will be automatically sucked into the test strip.



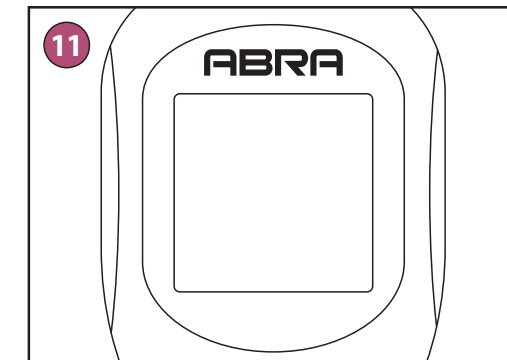
8 Make sure that the confirmation window perimeter is completely filled with blood.




9 When the test strip window is filled with blood, the device will start counting down from 5 to 1.



10 The glucose meter will display the measurement result, which will be automatically stored in memory.



11 Glucose meter will automatically turn off after removing the test strip.

 Diagnosis S.A.,
ul. Gen. W. Andersa 38A,
15-113 Białystok, Poland
www.diagnosis.pl

 0197

Rev. 2024.05.22 v.3